

Living
things and
their
habitats

Who's habitat is it anyway?

Objectives:

- ✓ Identify different types of habitat.
- ✓ Describe different animals from a particular habitat.
- ✓ Explain how animals are suited to the environment in which they are found.
- ✓ Design an animal to suit a particular



What
different
types of
habitat are
there?



What are
adaptations?

What is adaptation?

The process whereby a species evolves characteristics that enable it to survive in a particular habitat.

- Adaptations allow species to live successfully in their habitat.
- Species living in different habitats need different adaptations.



Types of Adaptation

- Physical Adaptations

A changing feature of a living thing that helps it to survive in a particular environment. These changes usually happen very gradually over generations (years).

- Behavioural Adaptations:

A thing that a living thing does to survive in a particular environment, such as the way they feed, breed or move.



Why are
adaptations
so important?

What can an animal change
to adapt?

Movement



Yellowfin tuna

Communication



Giant cuttlefish



Humpback whale

Regulating body temperature

(Keeping warm or cool)



Walrus



Galapagos marine iguana

Diurnal or nocturnal



Humphead parrotfish



Common lobster

Camouflage



Pygmy seahorse

Escaping predators



Five-lined snapper



Gulf torpedo ray



Purple sea urchin

Effective hunting



Emperor penguin



Great white shark



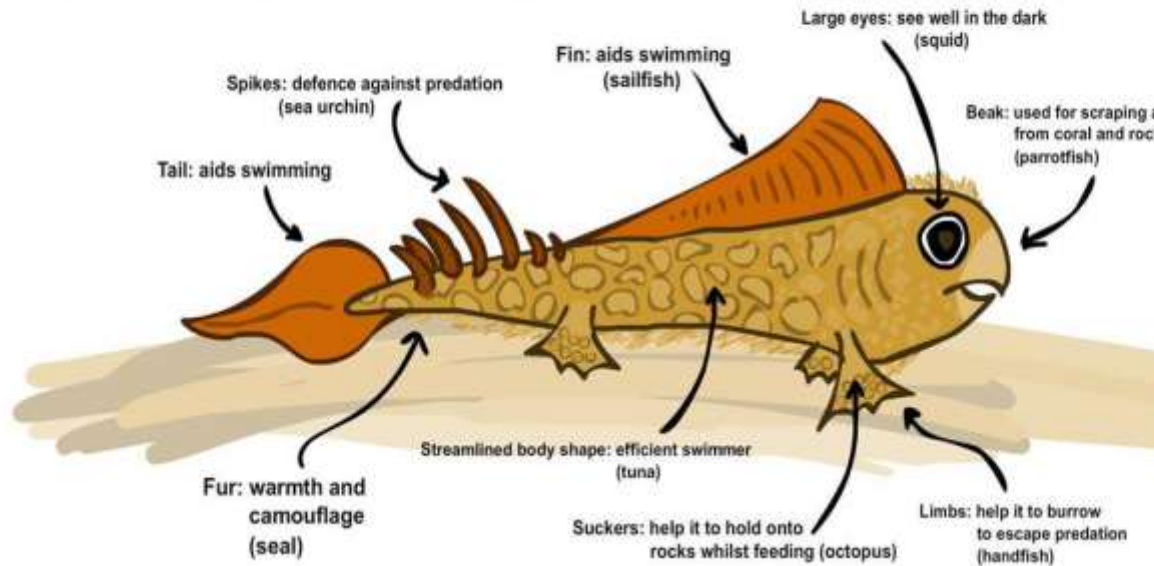
Yellow-bellied sea snake

Your Task

You must now use the information on adaptations that you have read to design a new species that is also adapted to survive in your habitat!

Meet the spiny skipper – a prey species adapted for the marine environment.

- Nocturnal to avoid day time predation (lobster)
- Feeds on algae found on coral and rocks (parrotfish)
- Feeds in a group to decrease risk of predation (Indo-Pacific sergeant fish)
- Camouflaged when burrowed in the sand (Caribbean electric ray)



Choose a habitat from the end slide and use it to design your own animal. Label it, like the example above, and describe how it has adapted to its habitat

Things to think about...

- What does it eat? What is it hunted by?
- Is it brightly coloured or camouflaged?
- How does it move?
- Does it live with other members of the same species or on it's own?
- How does it keep warm / cool?
- Where does it live? E.g. In trees? Burrows? Underground? On shore? At sea?
- How big is it?
- What is it's name?

Choose a habitat or create one of your own

