



Thanks for not printing this page!

Simply print from page 2 in your printing options to avoid wasted paper & ink!



...your first choice for easy to use, trusted and high quality teaching materials for educators and parents worldwide - professionally crafted materials with a personal touch.

A brief word about copyright...

By downloading this resource, you agree to the following:



You may use this resource for personal and/or classroom use only.

In order to support us, we ask that you always acknowledge www.twinkl.co.uk as the source of the resource. **If you love these resources, why not let others know about Twinkl?**



You must not reproduce or share this resource with others in any form. They are more than welcome to download the resource directly from us.

You must not host or in any other way share our resources directly with others, without our prior written permission.

We also ask that this product is not used for commercial purposes and also that you do not alter the digital versions of our products in any way.

Thank you for downloading!

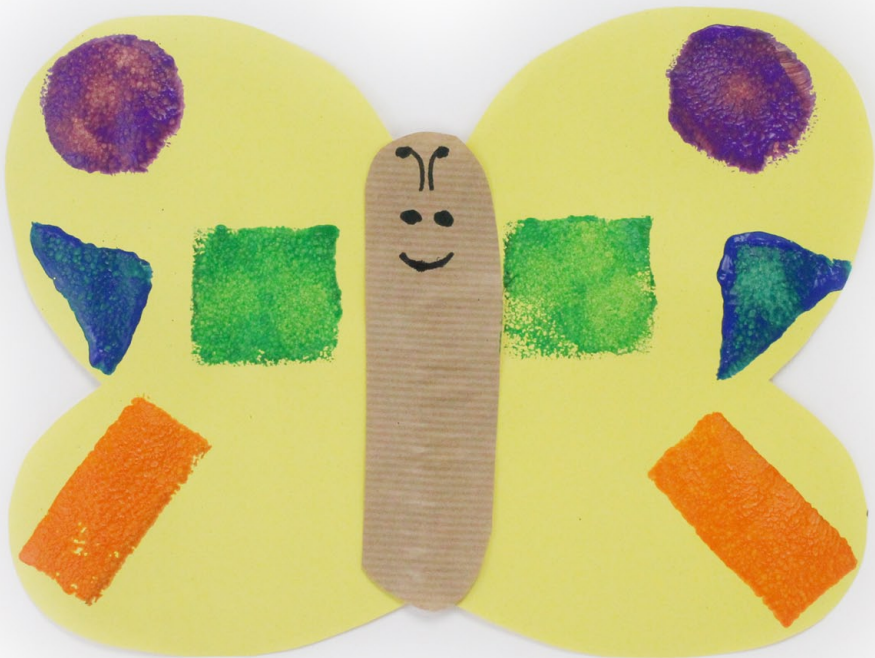
We hope you enjoy the resource and we'll see you very soon!



Did you know we also have twinkl Premium for schools?
Email sales@twinkl.co.uk for more information.

Spring Craft Instructions

Butterfly Shapes



You will need...

Brightly coloured A4 paper
Paint in a range of pastel colours

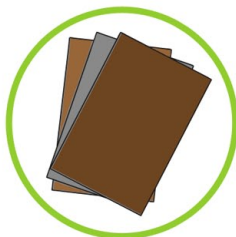
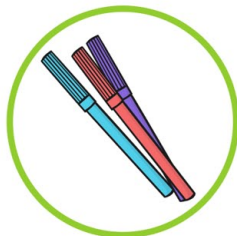
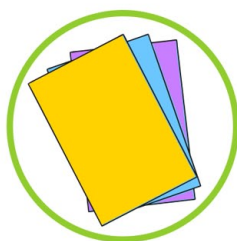
Sponges

Felt tips

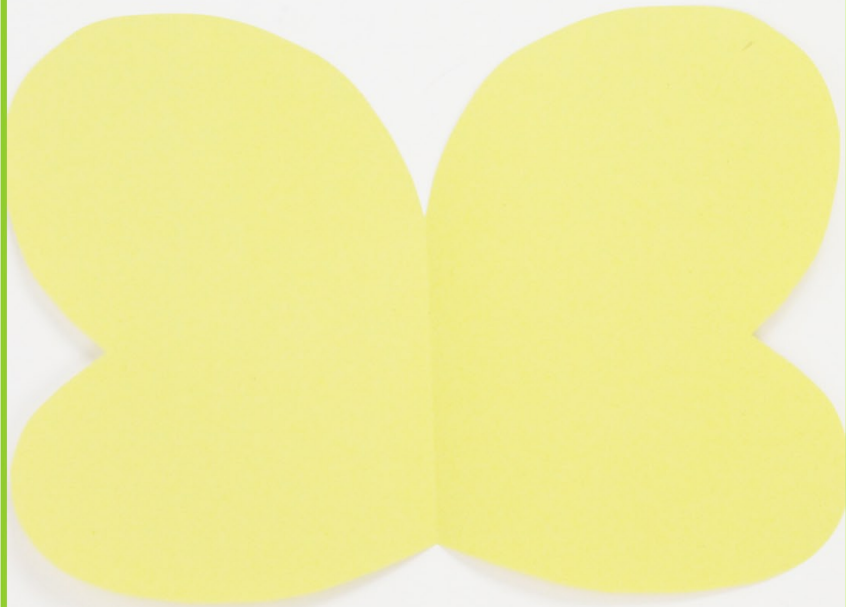
Scissors

Brown or black paper

PVA glue



1.



Choose a sheet of brightly coloured A4 paper and fold it in half. Cut out one half of a butterfly's wings and open out the paper to show four wings.

2.



Using the black or brown card, cut out a sausage shape; this will be the body of the butterfly. Glue this into place along the middle of the butterfly.

3.



Cut out the following shapes from the sponges, circle, square, rectangle, triangle, star and oval.

4.



Using the sponges print on to the wings making sure you make the same prints on both sides!

5.



Once the paint is dry, draw a face and antennae on the butterfly.