

Pupil Activity

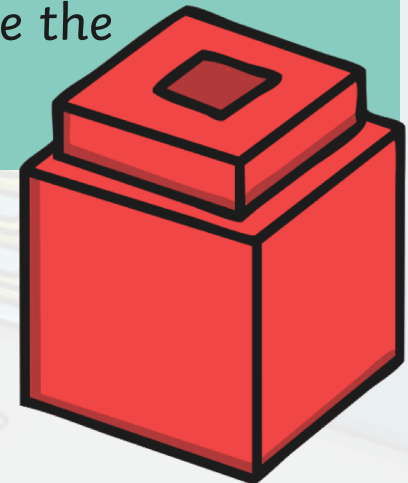
Work with a partner.

Take a handful of cubes or counters.

Estimate how many you have taken.

Ask your partner to count your cubes to see how close your estimate is to the actual amount.

Repeat, letting your partner take the next handful.

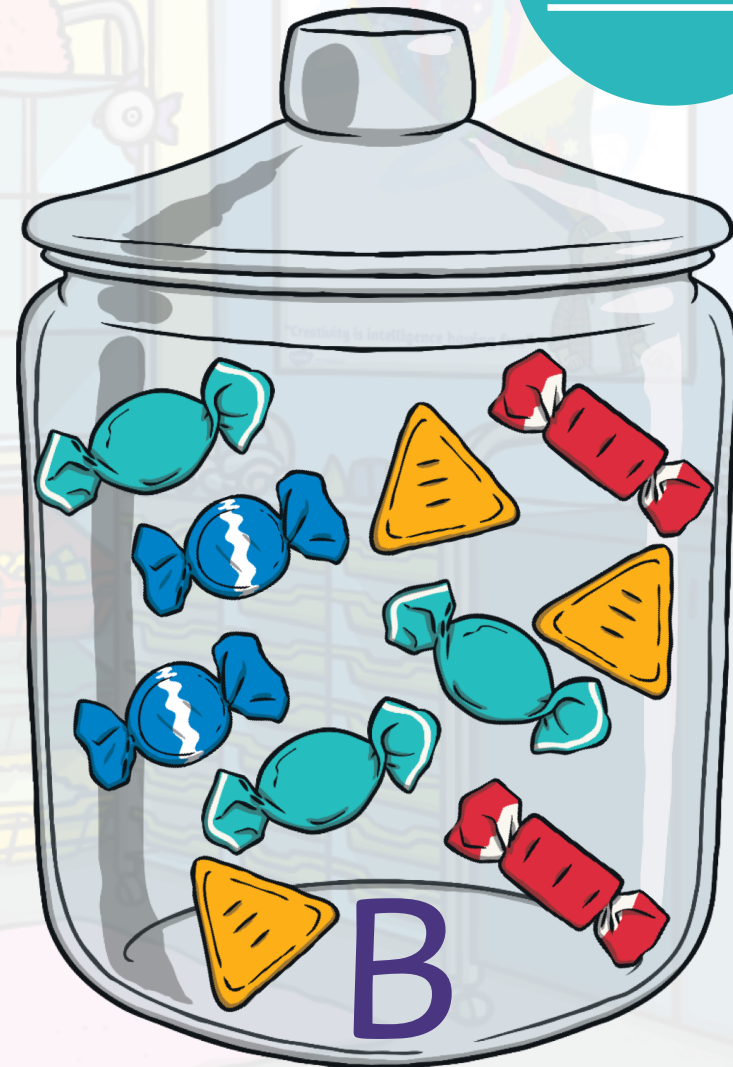
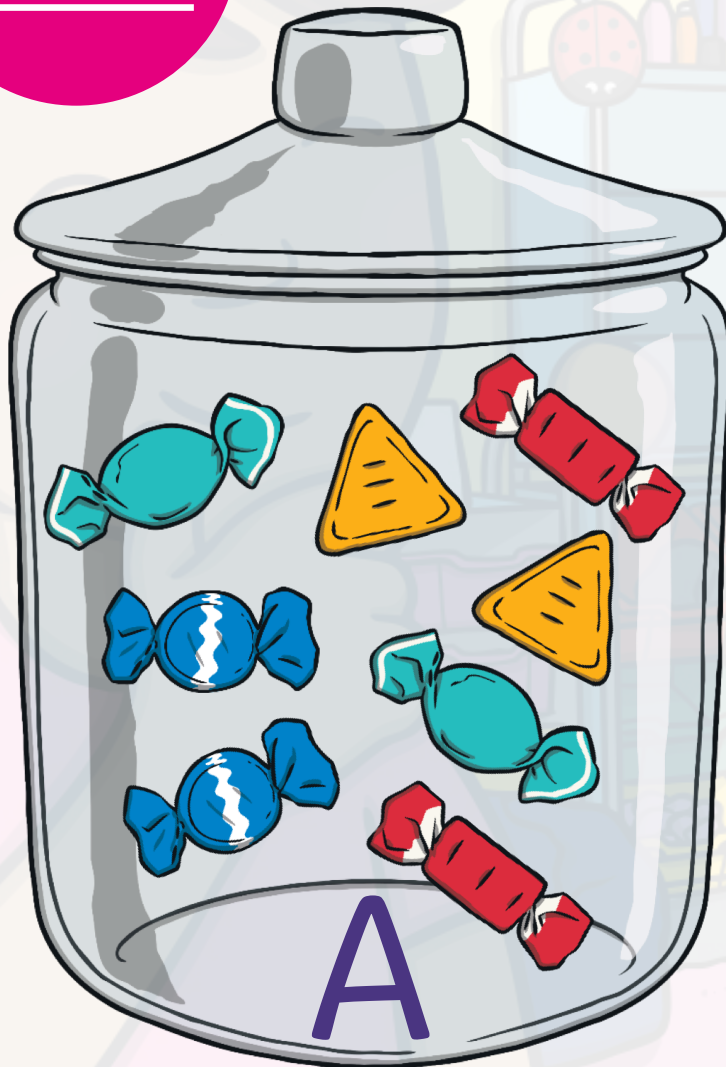


Estimate:

Compare

Which set has more in it?

Check:



Estimate:

Compare

Which set has more in it?

Check:

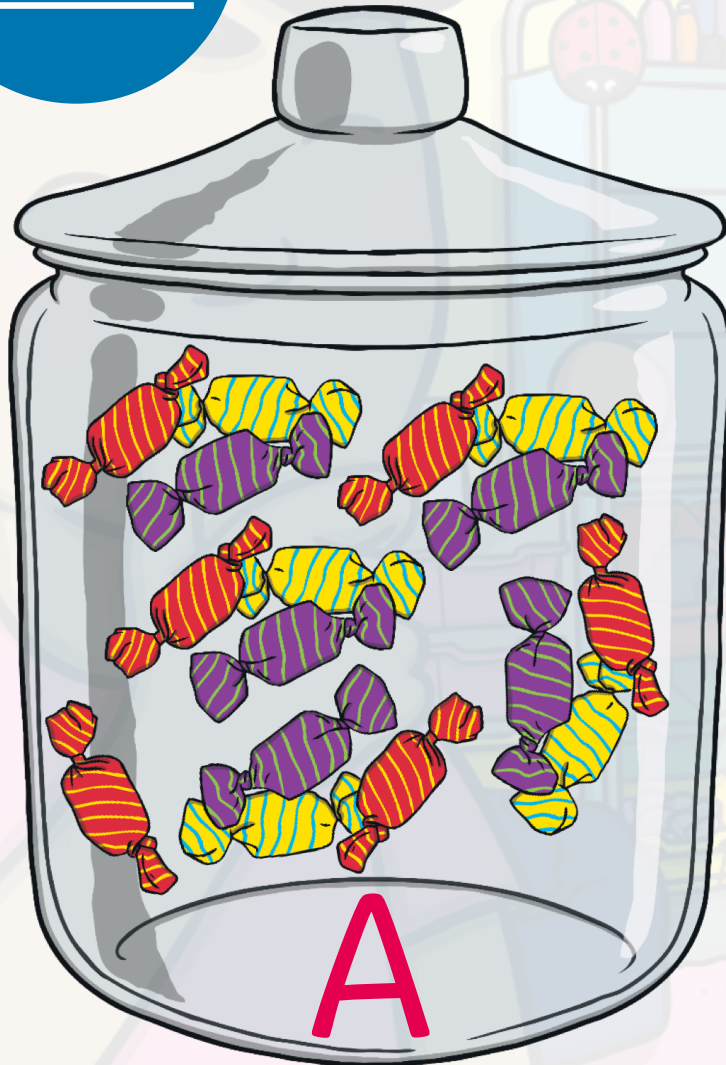


Estimate:

Compare

Which set has more in it?

Check:





Pupil Activity

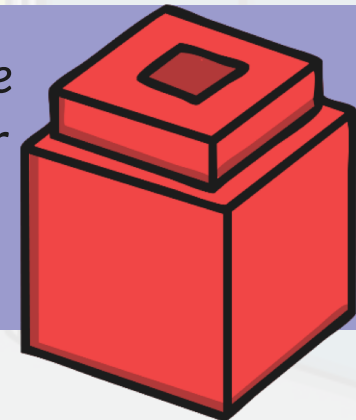
Work with a partner.

Each take a handful of cubes.

Lay them in front of you and compare them with your partner's cubes.

Estimate then check.

Have a few tries. Then, estimate the exact number of cubes in both your own and your partners handfuls before counting to check.



Plenary

What have we learnt today?

We have been learning to... estimate.

Estimating is making a sensible... guess.

We can check our estimation by... counting.



