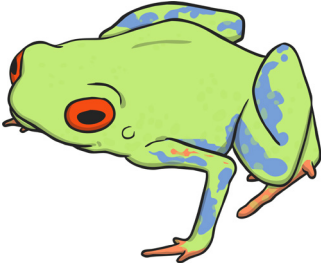


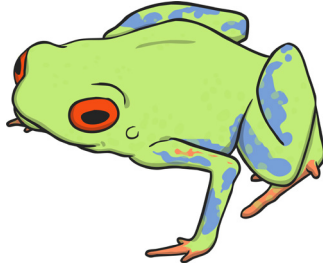
# Clue Cards

Cut out each clue card and mix them up. Stick them up around the classroom.

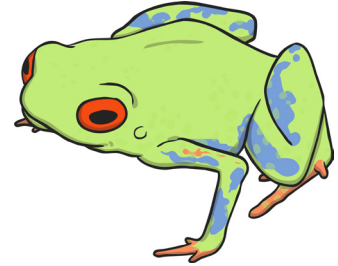
The female lays a mass of eggs that are fertilised by the male.



After 2-25 days the tadpoles hatch from the eggs.



The tadpole swims and eats plants. It breathes through gills.



The tadpole develops lungs and hind legs.



The tadpole grows front legs and its tail shortens. The froglet jumps out of the water onto land.



The tail disappears completely and the froglet starts to eat insects. In 2-4 years it will become an adult and will reproduce.



Fertilised eggs are laid by the female.



The eggs hatch into larvae called caterpillars. The caterpillar eats leaves and grows bigger.



The caterpillar forms a hard case around itself called a chrysalis.



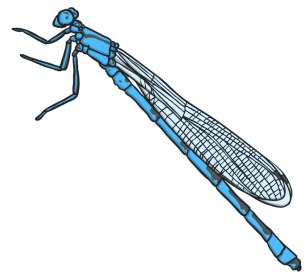
Inside the chrysalis, the caterpillar transforms into a butterfly.



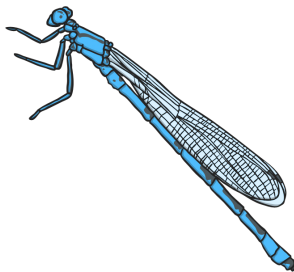
The adult butterfly breaks out of the chrysalis and reproduces.



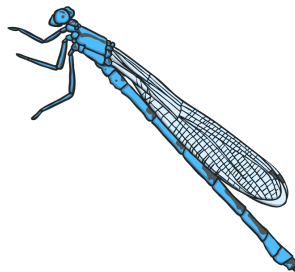
The female lays fertilised eggs in or near water.



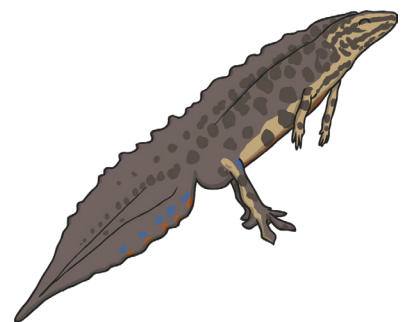
The eggs hatch into nymphs. These look like small adults without wings. The nymph lives in water for up to 4 years.



The fully grown nymph crawls out of the water up the stem of a plant. It sheds its skin and emerges as a dragonfly. It will find a mate and reproduce.



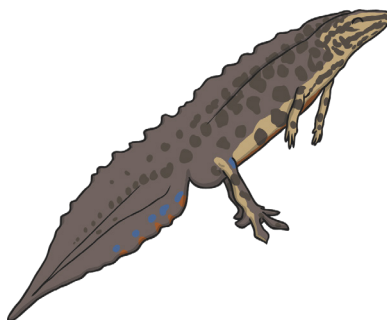
The female lays fertilised eggs in water.



After 2 or 3 weeks, tadpoles hatch from the eggs. They eat plankton and small insects and breathe through gills.



The tadpoles grow front legs, then back legs. They develop lungs to breathe. They look like small newts.



The young newts leave the water after about 10 weeks. After three years, they will be adults and will reproduce.

