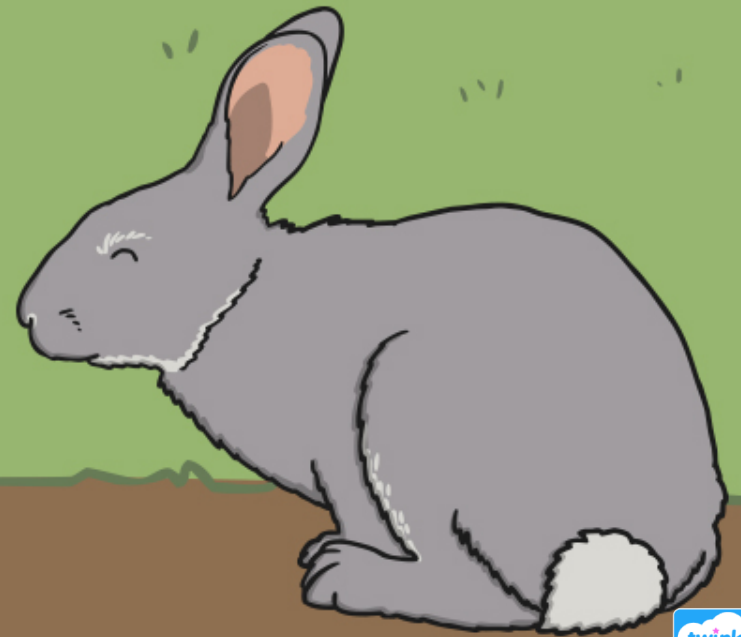


# Baby Bunny Number Line

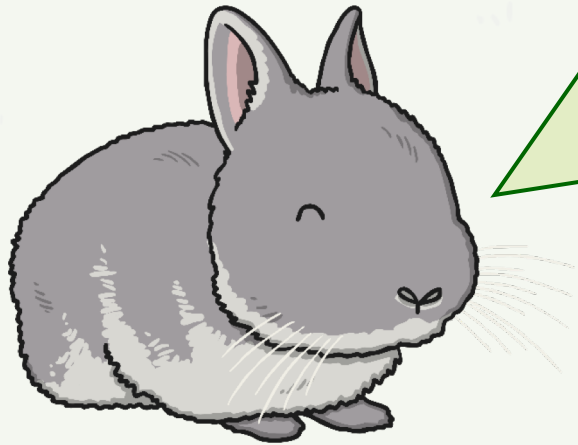
Addition and Reasoning



twinkl

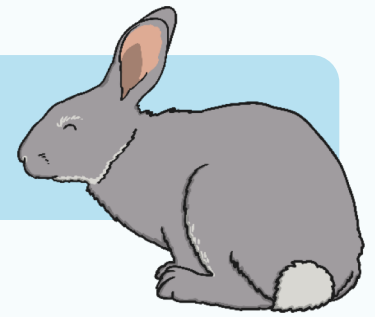


# Instructions

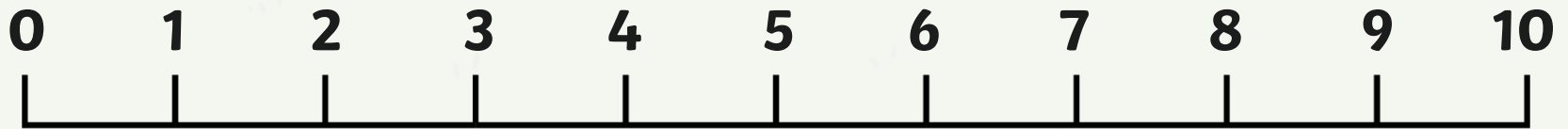


Hello everyone!  
My name is Baby Bunny.  
I love to jump and bounce along my  
number line.  
Can you help me work out which  
numbers I will land on?

Baby Bunny is on 0. He jumps on 1 more.  
What number will he land on?

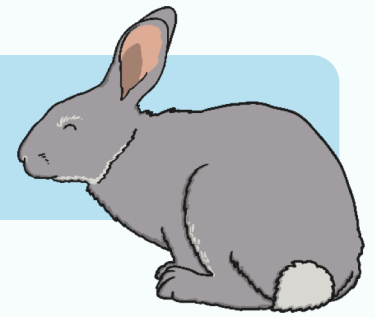


Click me to  
help me jump!

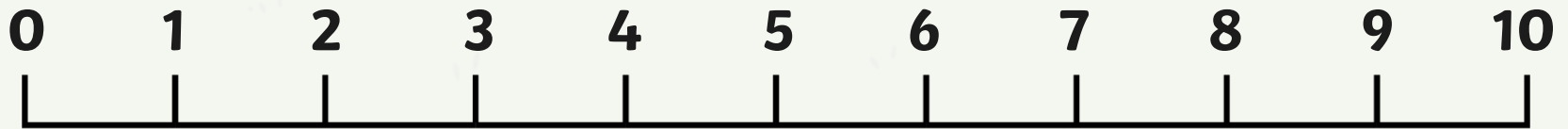


**0 and 1 makes 1**

Baby Bunny is on number 1. Can you count on 1 more? Which number will Baby Bunny land on?

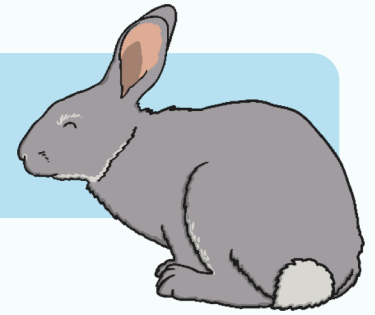


Click me to help me jump!

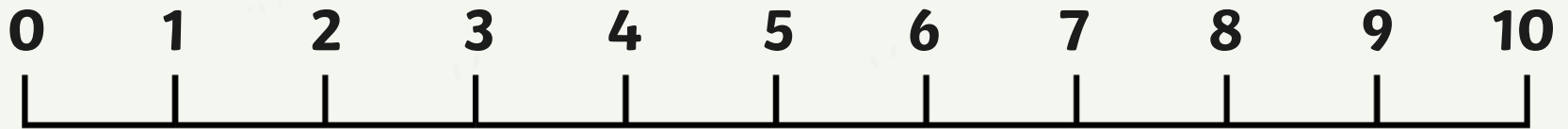


**1 and 1 makes 2**

Baby Bunny is on number 2. He jumps on 1 more.  
What does 2 add 1 make?

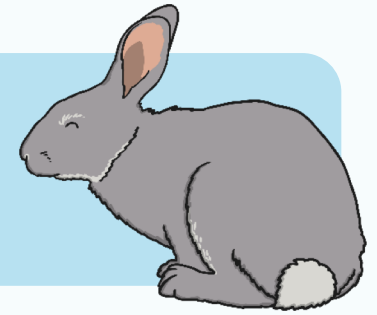


Click me to  
help me jump!

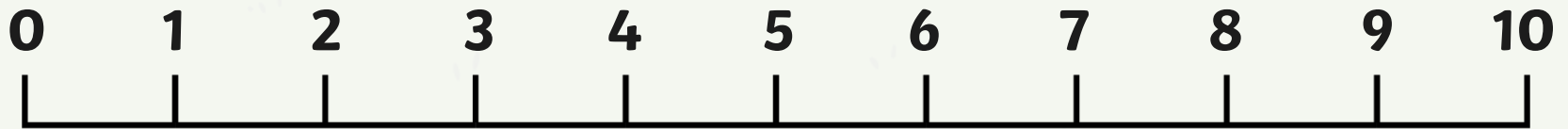


**2 add 1 makes 3**

Baby Bunny is on number 3. He jumps on 1 more.  
Can you count on to find which number Baby Bunny  
will land on? How do you know?

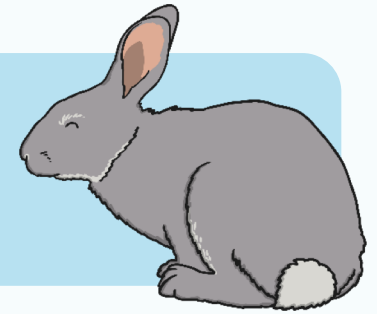


Click me to  
help me jump!

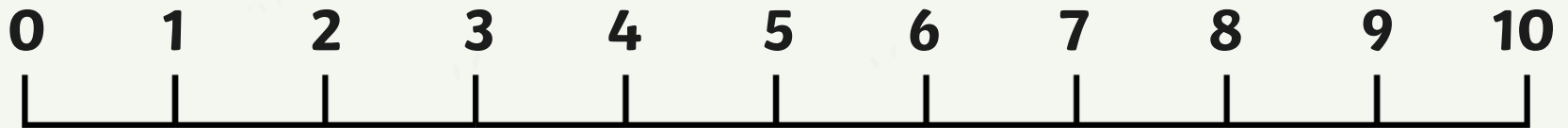


**3 add 1 makes 4**

Baby Bunny is on number 4. He jumps on 1 more.  
What do you notice about the number that is 1 more?  
Where is it on the number line?

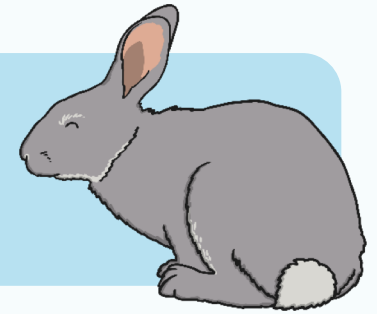


Click me to  
help me jump!

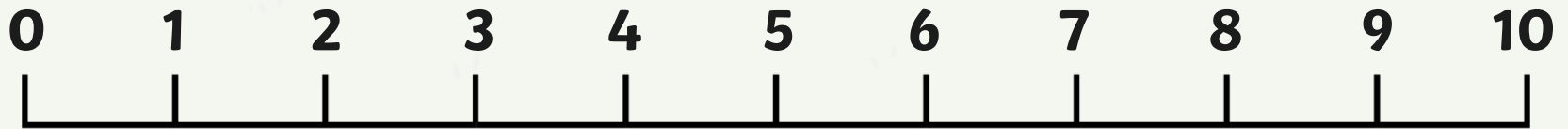


**4 add 1 equals 5**

Baby Bunny is on number 5. He jumps on 1 more.  
I think he will land on number 4. Am I correct?  
Why? Why not?



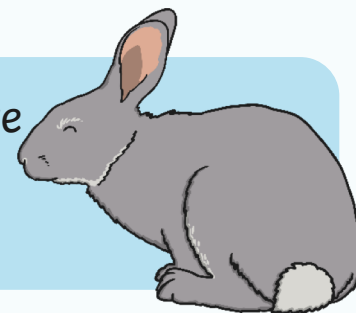
Click me to  
help me jump!



**5 add 1 equals 6**



Which number will Baby Bunny land on if he makes **2** more jumps along the number line? Can you use the number line or your fingers to help you work out the answer?

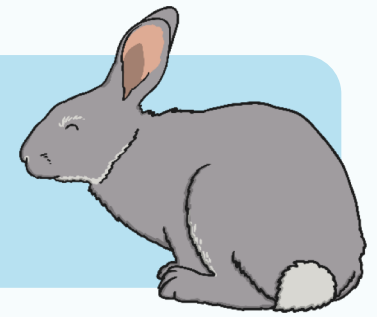


Click me to  
help me jump!

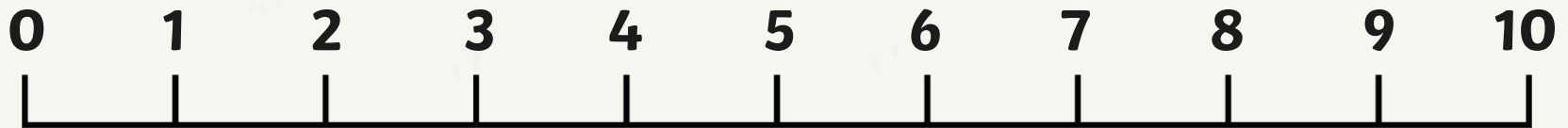


$$6 + 2 = 8$$

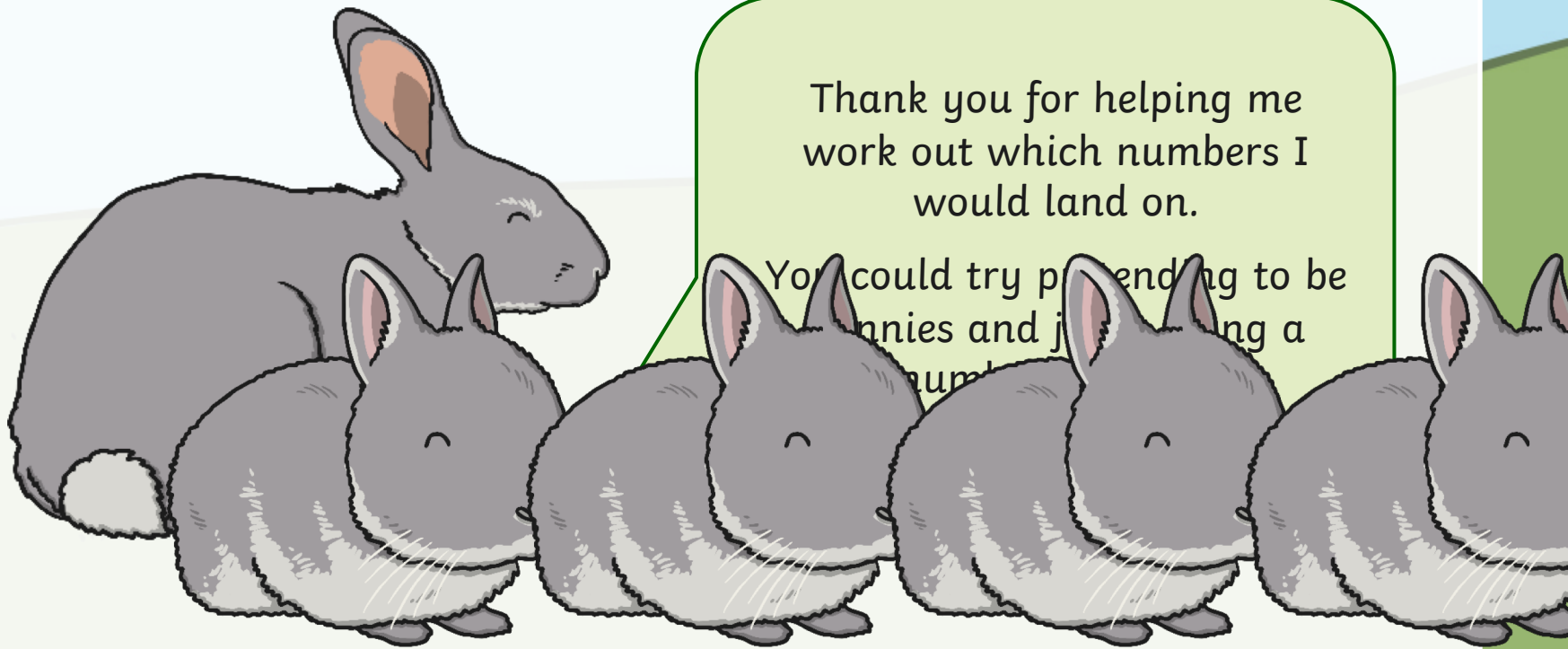
Baby Bunny is going to make **2** more jumps.  
Can you tell a friend a number sentence about  
these jumps?



Click me to  
help me jump!



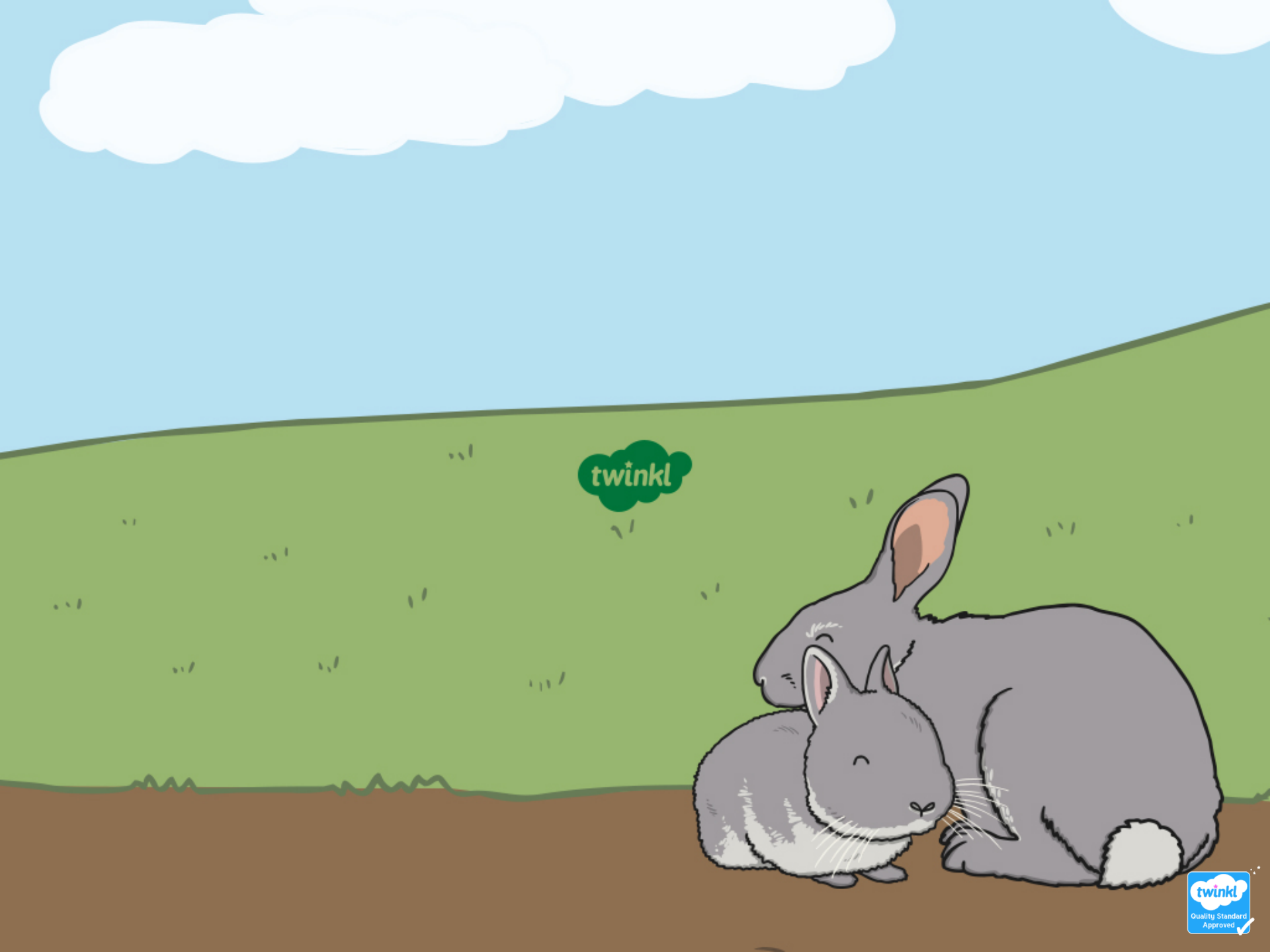
$$8 + 2 = 10$$



Thank you for helping me  
work out which numbers I  
would land on.

You could try pretending to be  
bunnies and jumping on a  
number line.

Play Again



twinkl