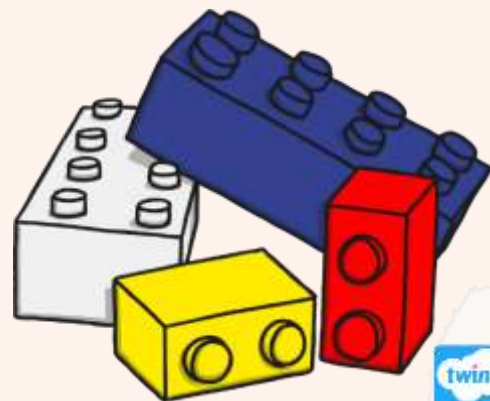
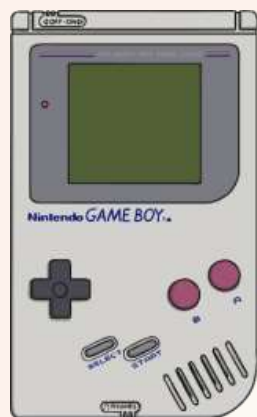
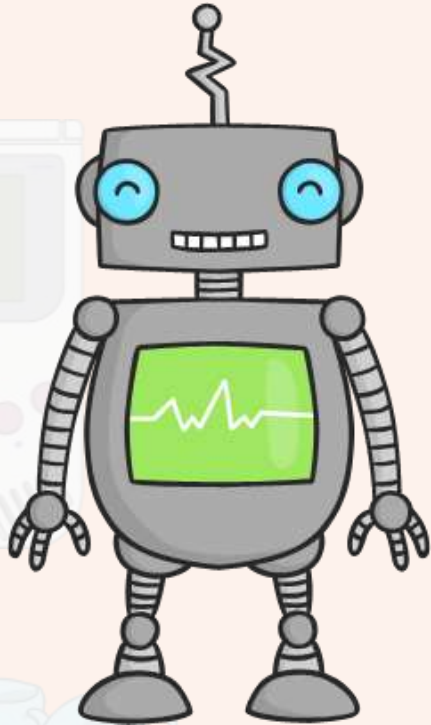




How are our toys different from those in the past?



Think of a modern toy.



What is it made from?

What colour is it?

How does it work?

Does it move?

Does it need batteries?

What is the best thing about the toy?



How could we find out about toys in the past?

We can ask our parents and grandparents or any other older people we know.

By visiting museums.

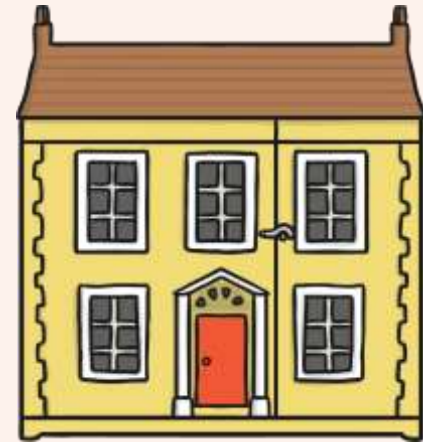
By searching the internet.

By watching TV/films that are set in the period of time we want to learn about.

By reading books that are set in the period of time we want to learn about.



What were toys like in the past?



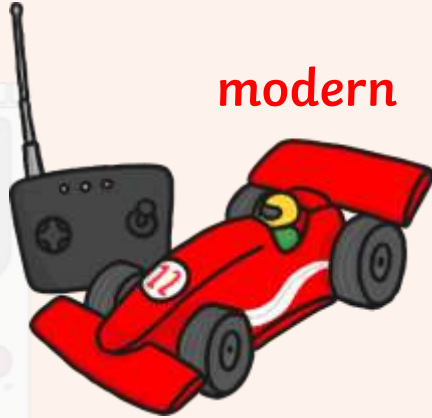
Are any of these toys still popular?

What are the differences between old toys and new toys?

	Old toys	New toys
Materials	Wood, tin, lead, china	Plastic, foam, rubber, nylon
Technology	Clockwork	Electronic speakers, screens
Manufacture	Mostly handmade	Mass produced in factories
Safety	Some sharp edges and unsafe materials	Strict rules are in place so that toys are very safe

Which toys are modern and which toys are old?

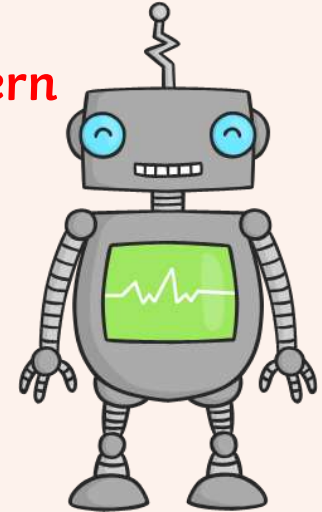
modern



old



modern



old



modern



old



What words and phrases can we use to describe toys?

new

toys with
batteries

weak

heavy

shiny

old

clean

light

games
consoles

strong

broken

rusty

light

push toys

remote
controlled
toys

Toy Timeline



1817



1902



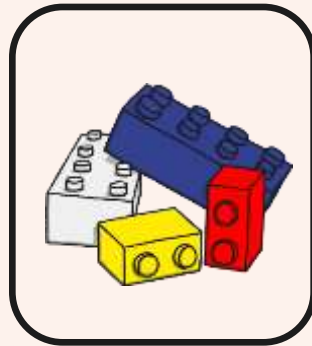
1957



1987



1859



1947

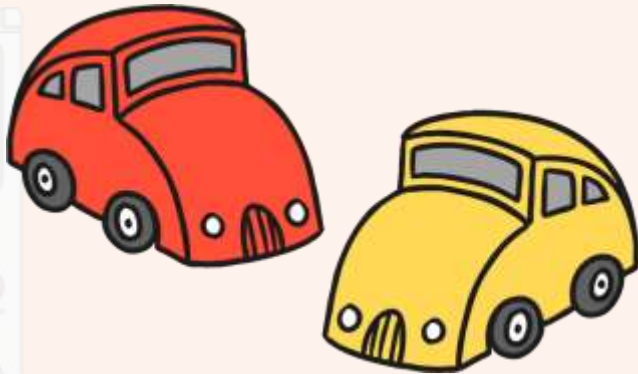


1959



2001

Compare the old toy car and new toy car



Made of tin

Goes in straight lines only

Runs on clockwork



Made of plastic

Can be steered by remote control

Runs on batteries

