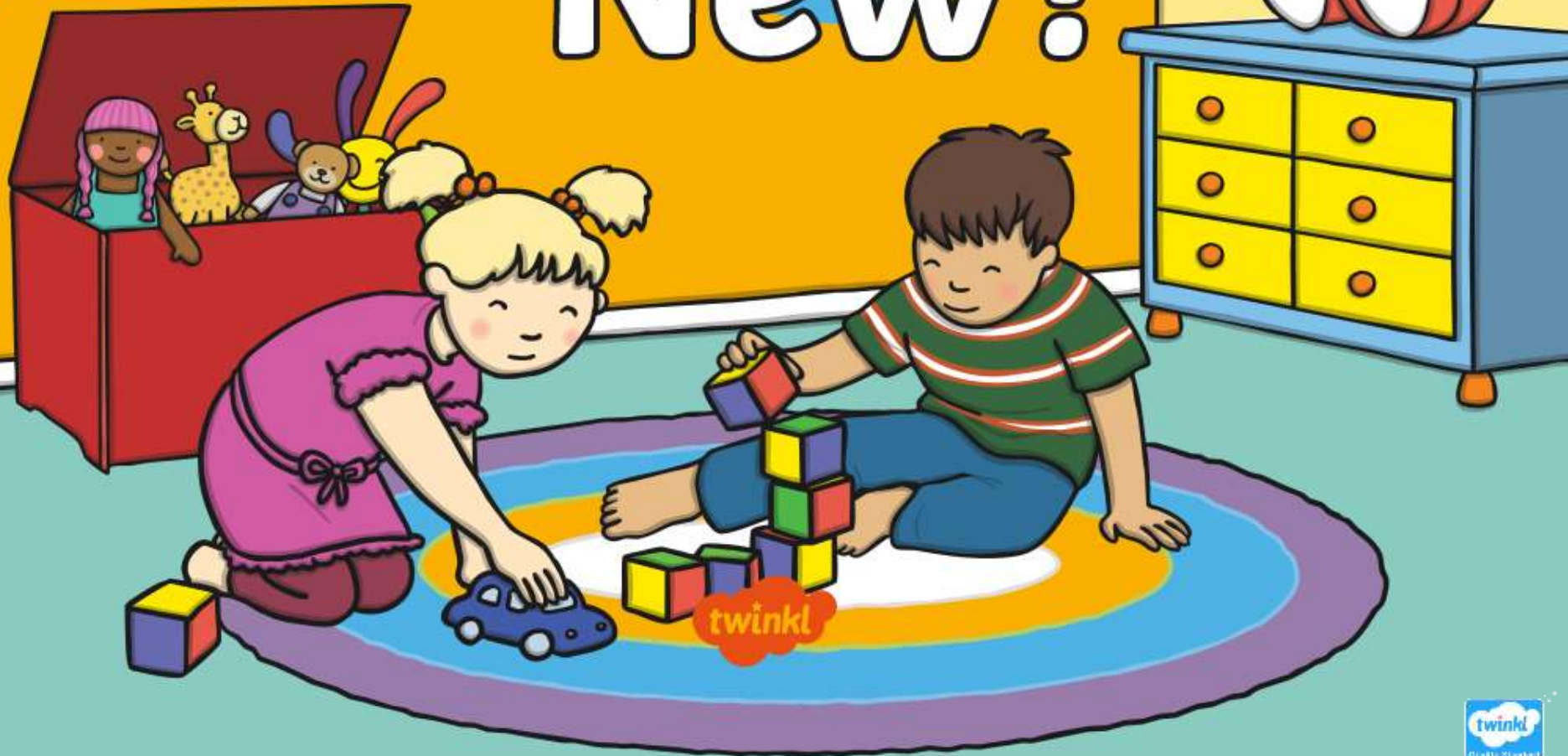



Is It Old or New?




New toys are being made all the time.

Can you decide what is an older toy and what is a newer toy?



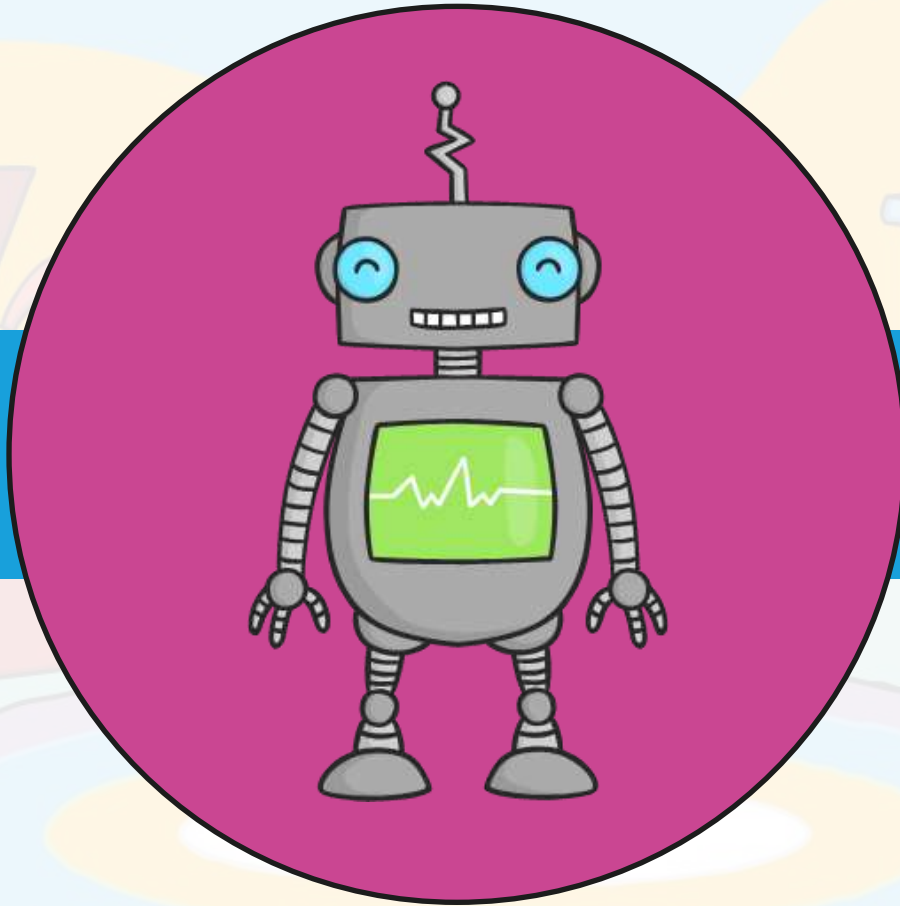
An older toy
may be a toy
that your
grandparents
may have
played with.



A newer toy
may be a toy
that you might
play with.

Is It **Old** or **New**?

old



new

next ▶

Is It **Old** or **New**?

old



new

next



Is It **Old** or **New**?

old

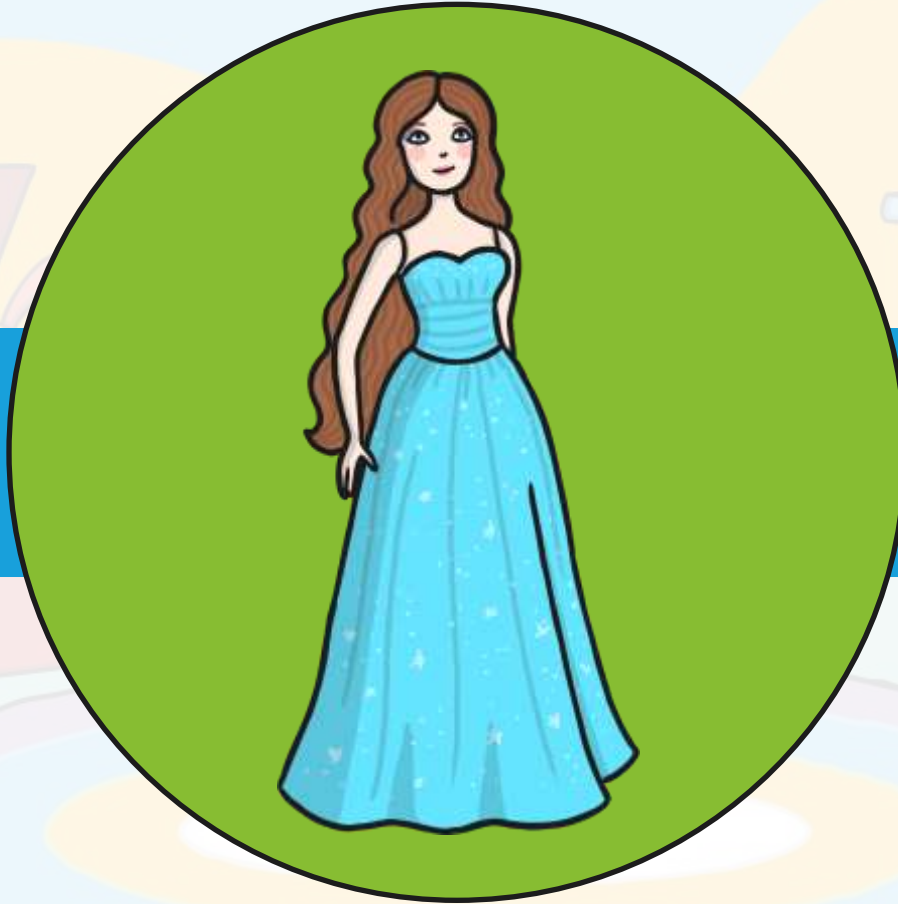


new

next



Is It **Old** or **New**?



old

new

next



Is It **Old** or **New**?

old



new

next



Is It **Old** or **New**?

old

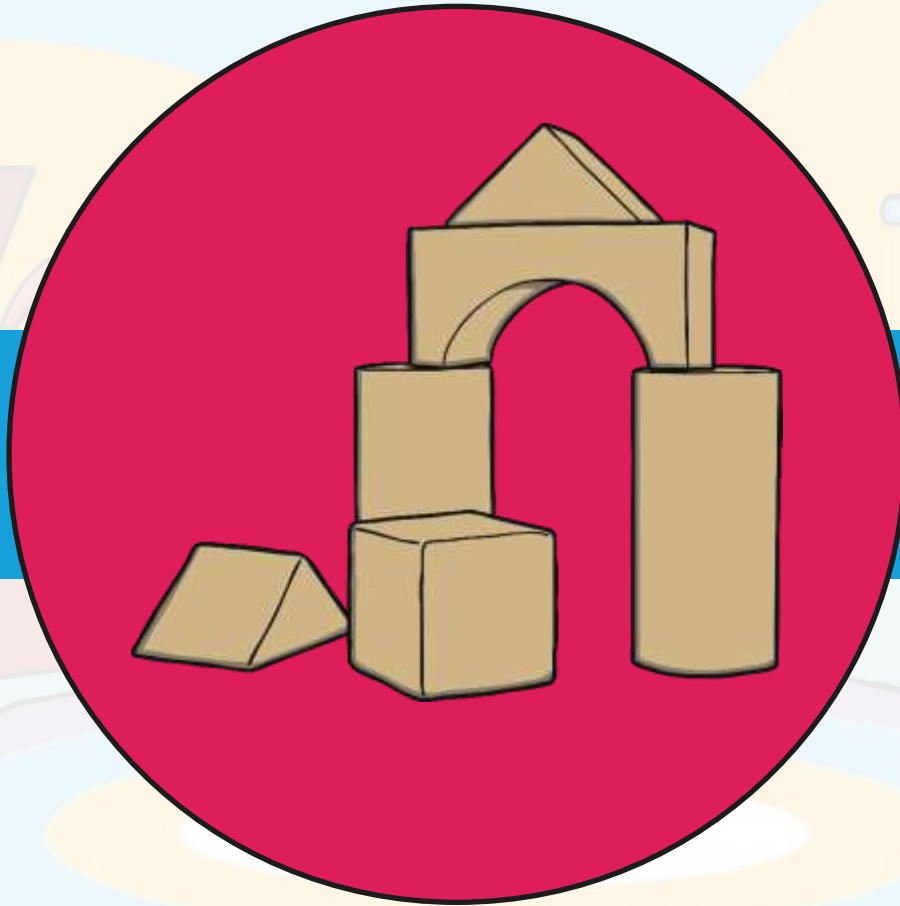


new

next ▶

Is It **Old** or **New**?

old



new

next ▶



twinkl