

Word problems

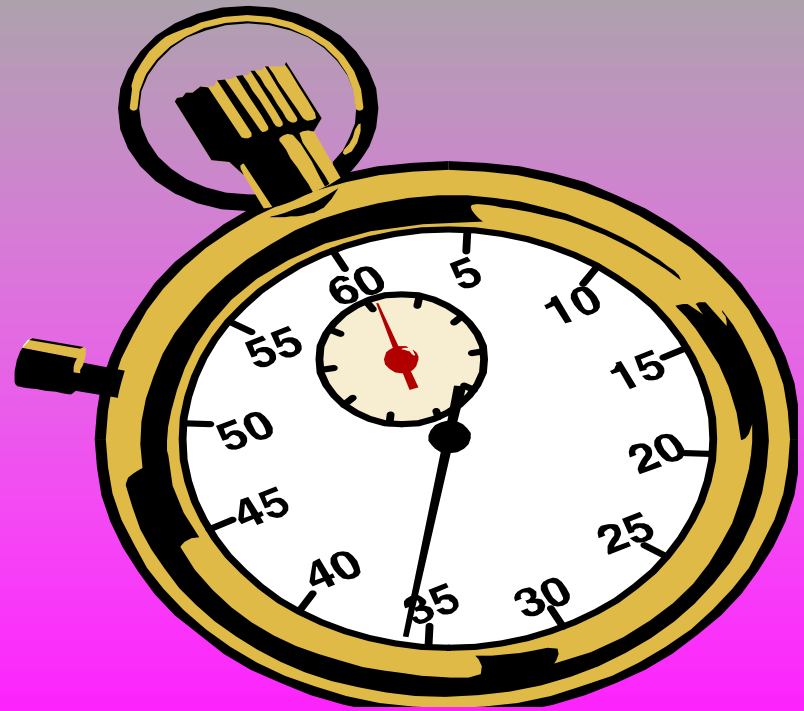
Time



Year 4

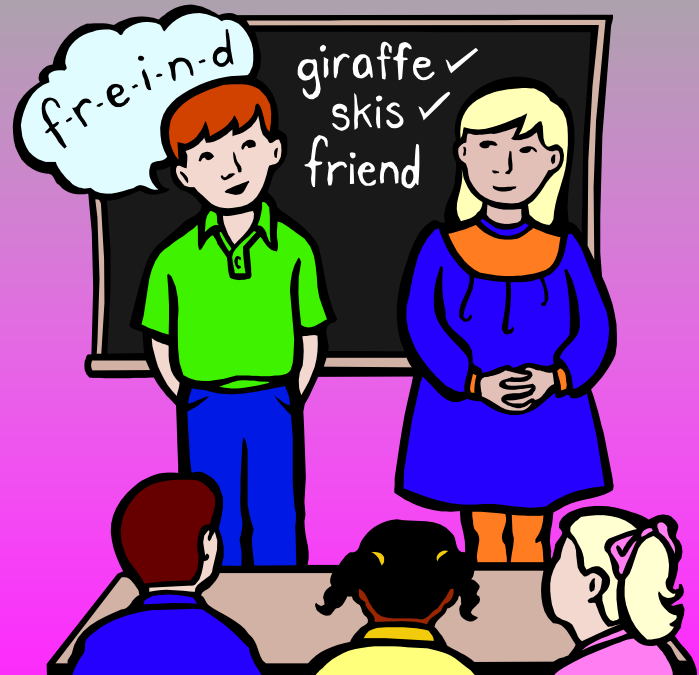
A clock shows 7.45. The clock is 17 minutes fast. What is the correct time?

- Strategy-subtraction
- $45 - 17$
- 28
- 7.28



It takes Javed 1 min 20 sec to count to 100. It takes twice as long to count to 200. How long to count to 200?

- Strategy-Multiplication
- 1 min 20 sec X2
- 2 min 40 sec



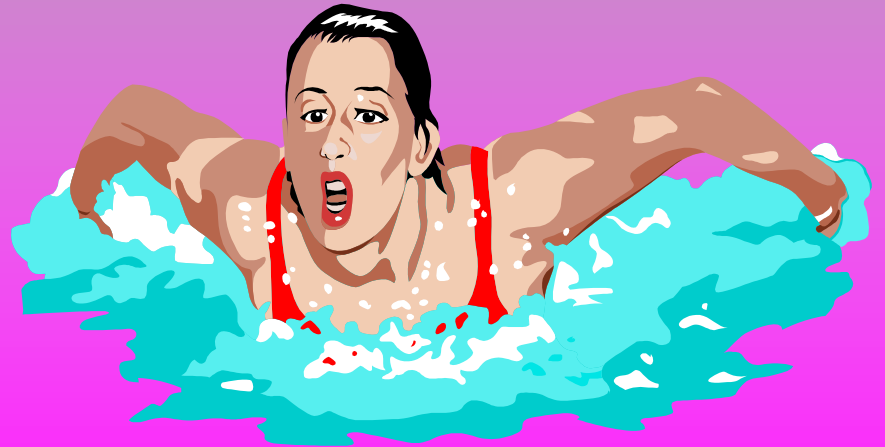
A bus takes 1 hour 40 minutes to get from Donby to North and 40 minutes to get from North to Peters. How long to get from Donby to Peters?

- Strategy-Addition
- 1 hour 40 mins+40 mins
- 1 hour 80 mins
- 2 hours 20 minutes



There are 4 swimmers in a relay team. Each swimmer takes 25 seconds. How long does it take the team to swim the race?

- Strategy-multiplication
- 25×4
- =100seconds
- 1 minute 40 seconds.



A bus journey takes 6 hours 40 minutes. A train takes half the time. How long does the train take?

- Strategy- division
- $6 \text{ hours } 40 \text{ mins} / 2$
- 3 hours 20 minutes



Each morning class 4H spend
from 9.00 to 12.00 at school.
They spend a quarter of the time
doing Maths. How long do they
do Maths?

- Strategy-addition and division
- $9.00-12.00=3$ hours
- $3 \text{ hours}=180$ minutes
- $180/4$
- 45 minutes.

